

# SRK-ZJ/ZK standard inverter

## SRK-ZJ (2.5-5.0 kW)

**SRK-ZJ:** Packed with features and the latest technologies in room air conditioning, the SRK Standard Inverter range offers energy efficient cooling and heating for individual rooms with a range of models from 2.5kW – 5.0kW cooling capacity. Featuring anti-allergen and deodorizing filters, a self clean operation, high power and economy modes, quiet operation and three dimensional louver controls for increased comfort.



SRK 25/35/50 ZJ-S

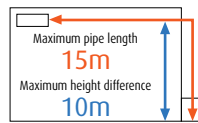


SRC 25/35 ZJ-S

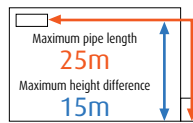


SRC50ZJ-S

### Refrigerant pipe length



SRK 25/35 ZJ-S



SRK50ZJ-S



Remote control included

Wired remote control\*



RC-E5(option)

\* Adaptor SC-BIKN-E required for hard wired controller

### Function



#### Comfortable Air Flow Functions



#### Convenient & Economy Functions



#### Maintenance & Prevention Functions



#### Others



## SRK-ZK (6.3-8.0 kW)

**SRK-ZK:** The all new SRK-ZK range is an extension of the standard inverter range which combines all the same features in new larger capacity models from 6.3kW – 8.0kW cooling capacity. The ZK range also features extended pipe runs up to 30m.



SRK 63/71/80 ZK-S

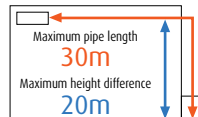


SRC 63/71/80 ZK-S



Remote control included

### Refrigerant pipe length



SRK 63/71/80 ZK-S

Wired remote control\*



RC-E5(option)

\* Adaptor SC-BIKN-E required for hard wired controller

### Function



#### Comfortable Air Flow Functions



#### Convenient & Economy Functions



#### Maintenance & Prevention Functions



#### Others



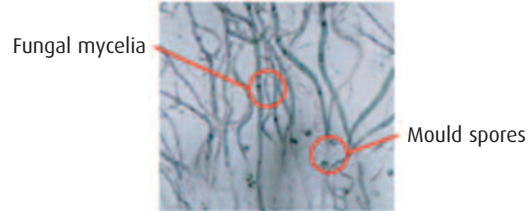
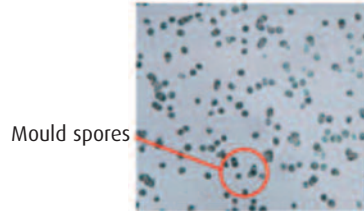
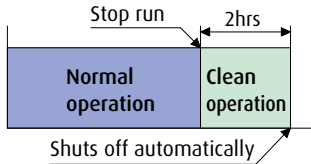


## Self clean operation

A new feature of wall mounted indoor units is the "self clean operation". When selected by the user, the unit will operate in a self clean mode for 2 hours after the unit has stopped its normal operation, removing moisture to prevent mould growth.

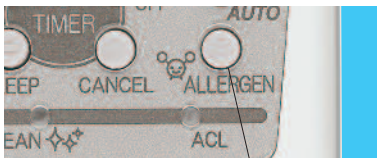
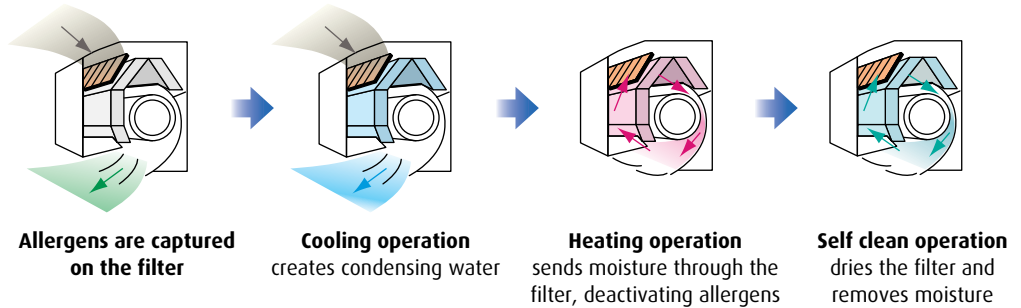
**Mould development in seven days:**  
Selecting the "self clean operation" prevents mould spores from developing

Without selecting the "self clean operation" fungal mycelia can develop from mould spores.



## Allergen clear system

To maintain fresh conditioned air in the room, an anti-allergen filter is included to capture and suppress allergens by controlling the temperature and humidity.



Push ALLERGEN mode

INDOOR UNIT c/w IR Controller		SRK25ZJ-S	SRK35ZJ-S	SRK50ZJ-S	SRK63ZK-S	SRK71ZK-S	SRK80ZK-S
OUTDOOR UNIT		SRC25ZJ-S	SRC35ZJ-S	SRC50ZJ-S	SRC63ZK-S	SRC71ZK-S	SRC80ZK-S
Cooling (Nominal)	kW	2.5	3.5	5.0	6.3	7.1	8.0
Cooling Range	kW	1.0 to 2.9	1.0 to 3.8	1.6 to 5.5	2.2 to 7.1	2.2 to 8.0	2.2 to 8.5
UK Cooling	kW	2.4	3.3	4.8	6.0	6.8	7.6
UK Sensible Cooling	kW	1.9	2.6	3.4	4.7	5.1	5.7
E.E.R (Energy Label)		4.03 (A)	3.47 (A)	3.23 (A)	3.58 (A)	3.29 (A)	3.02 (B)
Heating (Nominal)	kW	3.2	4.0	5.8	7.1	8.0	9.0
Heating Range	kW	1.2 to 4.2	1.3 to 4.8	1.6 to 6.6	1.7 to 9.5	1.6 to 10.0	1.7 to 10.5
C.O.P (Energy Label)		4.00 (A)	4.00 (A)	3.65 (A)	3.97 (A)	3.74 (A)	3.53 (B)
Operating Range (Outdoor Air) Cooling	°C DB	-15 to 46					
Operating Range (Outdoor Air) Heating	°C WB	-15 to 21					
<b>INDOOR UNIT</b>							
Exterior Dimensions (H x W x D)	mm	294 x 798 x 229	294 x 798 x 229	294 x 798 x 229	318 x 1098 x 248	318 x 1098 x 248	318 x 1098 x 248
Net Weight	kg	9.5	9.5	9.5	15	15	15
Air Volume (UL - L - M - H) Cooling	m <sup>3</sup> /s	na - 0.08 - 0.10 - 0.13	na - 0.08 - 0.11 - 0.17	na - 0.09 - 0.13 - 0.19	0.13 - 0.22 - 0.27 - 0.31	0.13 - 0.23 - 0.29 - 0.33	0.13 - 0.25 - 0.31 - 0.35
Air Volume (UL - L - M - H) Heating	m <sup>3</sup> /s	na - 0.09 - 0.11 - 0.18	na - 0.10 - 0.16 - 0.21	na - 0.13 - 0.17 - 0.23	0.21 - 0.24 - 0.30 - 0.34	0.23 - 0.26 - 0.33 - 0.36	0.25 - 0.28 - 0.34 - 0.39
Sound Pressure Level (UL - L - M - H) Cooling	dB(A)	na / 21 / 28 / 34	na / 22 / 32 / 42	na / 33 / 42 / 48	26 / 37 / 43 / 47	26 / 39 / 45 / 49	26 / 41 / 47 / 50
Sound Pressure Level (UL - L - M - H) Heating	dB(A)	na / 24 / 31 / 39	na / 25 / 37 / 43	na / 36 / 45 / 48	33 / 36 / 41 / 44	35 / 38 / 43 / 46	37 / 40 / 45 / 48
<b>OUTDOOR UNIT</b>							
Exterior Dimensions (H x W x D)	mm	540 x 780(+62) x 290	540 x 780(+62) x 290	640 x 800(+71) x 290	750 x 880(+88) x 340	750 x 880(+88) x 340	750 x 880(+88) x 340
Net Weight	kg	32	35	42	57	57	57
Sound Pressure Level	dB(A)	49	51	53	50	53	56
<b>ELECTRICAL DATA</b>							
Power Source Rating MCB	A	16	16	20	25	25	25
Mains Power To	Outdoor	230V/1ph/50Hz	230V/1ph/50Hz	230V/1ph/50Hz	230V/1ph/50Hz	230V/1ph/50Hz	230V/1ph/50Hz
Interconnecting Wires		3 + E	3 + E	3 + E	3 + E	3 + E	3 + E
Running Current - Cooling	A	3.1	4.7	6.8	8.0	9.7	11.9
Running Current - Heating	A	3.8	4.7	7.0	8.1	9.7	11.4
Power Input - Cooling	kW	0.62	1.01	1.55	1.76	2.16	2.65
Power Input - Heating	kW	0.80	1.00	1.59	1.79	2.14	2.55
Start - Max Run Current	A	4 - 9	5 - 9	7 - 14	8 - 17	10 - 17	12 - 17
<b>INSTALLATION/REFRIGERANT</b>							
Ref. Piping Size o.d ins (mm)	Liquid	1/4" (6.35)	1/4" (6.35)	1/4" (6.35)	1/4" (6.35)	1/4" (6.35)	1/4" (6.35)
	Gas	3/8" (9.52)	3/8" (9.52)	1/2" (12.7)	5/8" (15.88)	5/8" (15.88)	5/8" (15.88)
Ref. Max Piping Length	m	15	15	25	30	30	30
Vertical Height Difference (Max)							
- Outdoor Unit Above Indoor Unit	m	10	10	15	20	20	20
- Outdoor Unit Below Indoor Unit	m	10	10	15	20	20	20
Refrigerant Amount Precharged	kg	0.9	1.1	1.35	1.8	1.8	1.8
- For Pipe Length Up To	m	15	15	15	15	15	15
Additional Refrigerant	g/m	n/a	n/a	20	25	25	25



Because of our policy of continuous improvement, we reserve the right to make changes in all specifications without notice.