

# SRK-ZJX hyper inverter

## SRK-ZJX (2.5-6.0 kW)

**SRK-ZJX:** World class energy efficiency and performance is combined with all of the latest advances in room air conditioner technology in the SRK Hyper Inverter range. Our new twin rotary compressor combined with low resistance design of the indoor unit offers some of the most energy efficient cooling and heating available. Featuring anti-allergen and deodorizing filters, a self clean operation, high power and economy modes, quiet operation and three dimensional louver controls for increased comfort.



SRK 25/35/50/60 ZJX-S



SRC 25/35 ZJX-S



SRC 50/60 ZJX-S



Remote control included

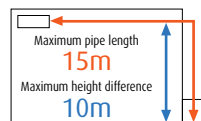
Wired remote control\*



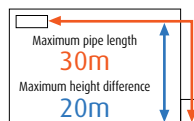
RC-E5(option)

\*Adaptor SC-BIKN-E required for hard wired controller

## Refrigerant pipe length



SRK 25/35 ZJX-S



SRK 50/60 ZJX-S1

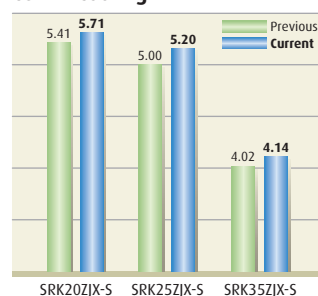
## Function



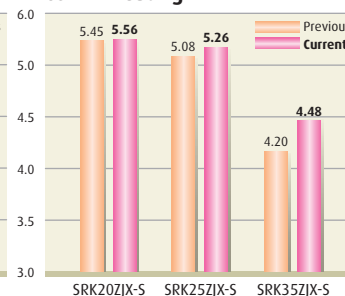
## Industry leading energy efficiency

The ZJX hyper inverter range achieves the highest COP's (Coefficient of Performance) in the market, utilizing advanced technology previously applied to large capacity models only.

### COP in Cooling



### COP in Heating



The industry's highest levels

**COP 5.71**

(SRK20ZJX-S in the cooling mode)





## Movable air inlet panel

The advanced design of the indoor unit includes a movable air inlet panel, minimising air resistance which helps to reduce energy consumption and noise levels.



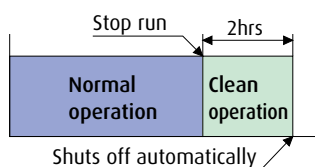
## Self clean operation

A new feature of wall mounted indoor units is the "self clean operation". When selected by the user, the unit will operate in a self clean mode for 2 hours after the unit has stopped its normal operation, removing moisture to prevent mould growth.

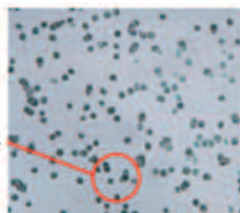
### Mould development in seven days:

Selecting the "self clean operation" prevents mould spores from developing

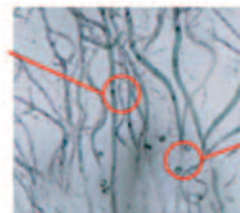
Without selecting the "self clean operation" fungal mycelia can develop from mould spores.



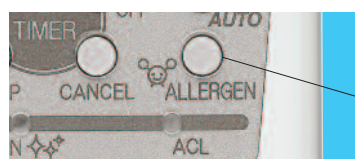
Mould spores



Fungal mycelia



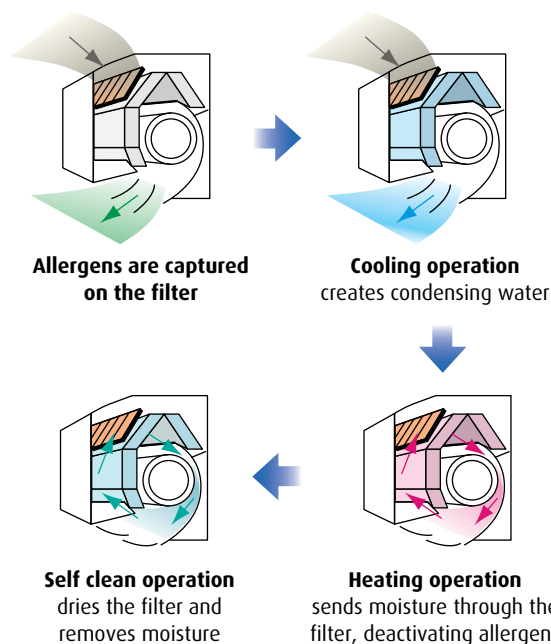
Mould spores



Push ALLERGEN mode

## Allergen clear system

The air in your room is kept fresh, "Allergen clear system" is equipped to suppress the influence of the allergen caught by the filter by controlling the temperature and humidity.



INDOOR UNIT c/w IR Controller		SRK25ZJX-S	SRK35ZJX-S	SRK50ZJX-S	SRK60ZJX-S
OUTDOOR UNIT		SRC25ZJX-S	SRC35ZJX-S	SRC50ZJX-S	SRC60ZJX-S
Cooling (Nominal)	kW	2.5	3.5	5.0	6.0
Cooling Range	kW	0.9 to 3.2	0.9 to 4.1	0.7 to 6.2	0.8 to 6.8
UK Cooling	kW	2.4	3.3	4.8	5.7
UK Sensible Cooling	kW	2.3	3.1	3.7	4.2
E.E.R (Energy Label)		5.20 (A)	4.14 (A)	3.85 (A)	3.23 (A)
Heating (Nominal)	kW	3.1	4.3	6.0	6.8
Heating Range	kW	0.9 to 4.7	0.9 to 5.1	0.7 to 8.8	0.8 to 9.7
C.O.P (Energy Label)		5.26 (A)	4.48 (A)	4.44 (A)	4.07 (A)
Operating Range (Outdoor Air) Cooling	°C DB	-15 to 46			
Operating Range (Outdoor Air) Heating	°C WB	-15 to 21			

INDOOR UNIT					
Exterior Dimensions (H x W x D)	mm	309 x 890 x 220	309 x 890 x 220	309 x 890 x 220	309 x 890 x 220
Net Weight	kg	15	15	15	15
Air Volume (L/M/H) Cooling	m³/s	0.08 - 0.15 - 0.21	0.08 - 0.16 - 0.23	0.13 - 0.18 - 0.23	0.15 - 0.21 - 0.24
Air Volume (L/M/H) Heating	m³/s	0.13 - 0.17 - 0.22	0.13 - 0.18 - 0.23	0.18 - 0.24 - 0.28	0.18 - 0.25 - 0.28
Sound Pressure Level (L/M/H) Cooling	dB(A)	22 / 31 / 41	22 / 33 / 43	26 / 38 / 45	26 / 38 / 47
Sound Pressure Level (L/M/H) Heating	dB(A)	27 / 34 / 41	27 / 35 / 42	32 / 38 / 45	33 / 39 / 45

OUTDOOR UNIT					
Exterior Dimensions (H x W x D)	mm	595 x 780(+62) x 290	595 x 780(+62) x 290	640 x 800(+71) x 290	640 x 800(+71) x 290
Net Weight	kg	38	38	43	43
Sound Pressure Level	dB(A)	47	50	48	51

ELECTRICAL DATA					
Power Source Rating MCB	A	16	16	20	20
Mains Power To	Outdoor	230V/1ph/50Hz	230V/1ph/50Hz	230V/1ph/50Hz	230V/1ph/50Hz
Interconnecting Wires		3 + E	3 + E	3 + E	3 + E
Running Current - Cooling	A	2.4	3.8	5.7	8.2
Running Current - Heating	A	2.9	4.4	5.9	7.3
Power Input - Cooling	kW	0.49	0.85	1.30	1.86
Power Input - Heating	kW	0.60	0.96	1.35	1.67
Start - Max Run Current	A	3 - 8	5 - 8	6 - 15	8 - 15

INSTALLATION/REFRIGERANT					
Ref. Piping Size o.d ins (mm)	Liquid	1/4" (6.35)	1/4" (6.35)	1/4" (6.35)	1/4" (6.35)
	Gas	3/8" (9.52)	3/8" (9.52)	1/2" (12.7)	1/2" (12.7)
Ref. Max Piping Length	m	15	15	30	30
Vertical Height Difference (Max)					
- Outdoor Unit Above Indoor Unit	m	10	10	20	20
- Outdoor Unit Below Indoor Unit	m	10	10	20	20
Refrigerant Amount Precharged	kg	1.2	1.2	1.4	1.4
- For Pipe Length Up To	m	15	15	15	15
Additional Refrigerant	g/m	n/a	n/a	20	20



Because of our policy of continuous improvement, we reserve the right to make changes in all specifications without notice.