

SRF-ZJX hyper inverter

SRF-ZJX (2.5-5.0 kW)

SRF-ZJX: World class energy efficiency and performance is combined with all of the latest advances in room air conditioner technology in the SRF Hyper Inverter range. Our new twin rotary compressor and low resistance design of the indoor unit offers some of the most energy efficient cooling and heating available. Ultra low sound levels are achieved through a unique louver design, while additional features include self clean operation, high power and economy modes, and a natural enzyme filter that destroys bacteria and is effective against viruses and allergens.



SRF 25/35/50 ZJX-S



SRC 25/35 ZJX-S



SRF50ZJX-S



Remote control included

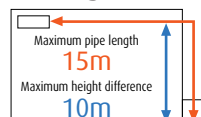
Wired remote control*



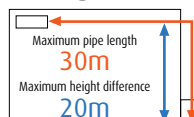
RC-E5(option)

* Adaptor SC-BIKN-E required for hard wired controller

Refrigerant pipe length



SRF 25/35 ZJX-S



SRF50ZJX-S1

Function

Self Clean Operation

Enzyme Filter

SUN Filter

Comfortable Functions

Fuzzy, Auto, HI POWER

Comfortable Air Flow Functions

Auto Flap, Memory, UP/DOWN, Air outlet selection

Convenient & Economy Functions

Economy, DRY, OFF Timer, Sleep, On 24h Timer, On Timer

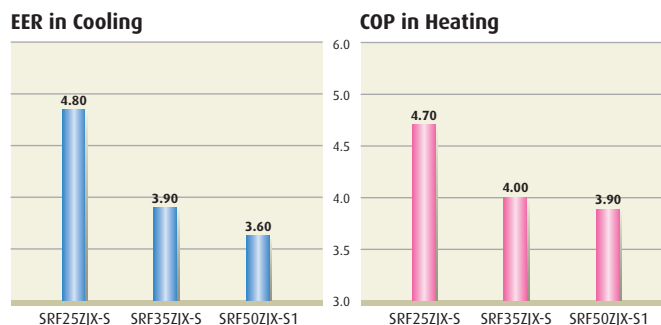
Maintenance & Prevention Functions

MC, Self Diagnostic, Detachable

Others

Back-up Switch, Auto Restart, Luminous

EER and COP levels

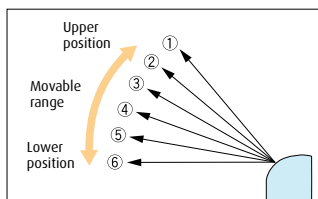


Sophisticated design

The sleek and compact design of the SRF indoor unit, combined with multi-direction pipe connections and either wall mounted or floor standing options, enables simple, discreet installation.

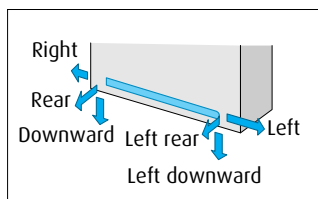
Quiet operation

By optimizing the balance between the air outlet direction and air flow volume, noise levels have been reduced significantly, down to 26(dB)A.



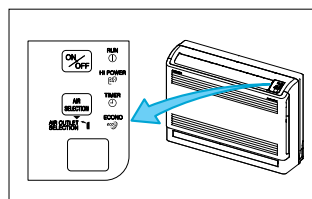
Louver control system

The air outlet louver position can be adjusted to several angles from the remote controller to ensure optimum comfort.



Installation workability

Piping and drain hose connection can be selected out of 6-directions.



Convenient operation

The air flow direction button on the body of the unit can be used to select air flow from either the upper outlet or both upper and lower outlets simultaneously to further optimize comfort.

Auto air outlet selection

Heating operation:

When both the upper and lower air outlets are selected to operate with Auto Fan Speed, the lower outlet operates only after 20 minutes (or until the room set point is achieved) in order to prevent 'stirring' of the warm air and maintain optimum comfort.



Cooling operation:

When both the upper and lower air outlets are selected to operate in Cooling or Dry modes, both outlets will operate for an hour (or until the room set point is achieved) then automatically the upper outlet will operate only. When both the upper and lower air outlets are selected to operate with Auto Fan Speed, the upper outlet operates only after 10 minutes (or until the room set point is achieved) then both outlets will operate to spread the conditioned air to every corner of the room.

INDOOR UNIT c/w IR Controller		SRF25ZJX-S	SRF35ZJX-S	SRF50ZJX-S
OUTDOOR UNIT		SRC25ZJX-S	SRC35ZJX-S	SRC50ZJX-S
Cooling (Nominal)	kW	2.5	3.5	5.0
Cooling Range	kW	0.9 to 3.2	0.9 to 4.1	0.7 to 5.5
UK Cooling	kW	2.4	3.3	4.8
UK Sensible Cooling	kW	2.1	2.6	3.5
E.E.R (Energy Label)		4.80 (A)	3.93 (A)	3.60 (A)
Heating (Nominal)	kW	3.4	4.5	6.0
Heating Range	kW	0.9 to 4.7	0.9 to 5.1	0.7 to 7.0
C.O.P (Energy Label)		4.70 (A)	4.00 (A)	3.90 (A)
Operating Range (Outdoor Air) Cooling	°C DB	-15 to 46		
Operating Range (Outdoor Air) Heating	°C WB	-15 to 21		

INDOOR UNIT				
Exterior Dimensions (H x W x D)	mm	600 x 860 x 238	600 x 860 x 238	600 x 860 x 238
Net Weight	kg	18	19	19
Air Volume (L/M/H) Cooling	m ³ /s	0.10 - 0.13 - 0.15	0.11 - 0.13 - 0.15	0.11 - 0.16 - 0.19
Air Volume (L/M/H) Heating	m ³ /s	0.11 - 0.1 - 0.18	0.12 - 0.14 - 0.18	0.13 - 0.17 - 0.20
Sound Pressure Level (L/M/H) Cooling	dB(A)	26 / 32 / 40	28 / 34 / 41	30 / 39 / 47
Sound Pressure Level (L/M/H) Heating	dB(A)	28 / 35 / 40	31 / 36 / 41	32 / 39 / 47

OUTDOOR UNIT				
Exterior Dimensions (H x W x D)	mm	595 x 780(+62) x 290	595 x 780(+62) x 290	640 x 800(+71) x 290
Net Weight	kg	38	38	43
Sound Pressure Level	dB(A)	47	50	48

ELECTRICAL DATA				
Power Source Rating MCB	A	16	16	20
Mains Power To	Outdoor	230V/1ph/50Hz	230V/1ph/50Hz	230V/1ph/50Hz
Interconnecting Wires		3 + E	3 + E	3 + E
Running Current - Cooling	A	2.5	3.9	6.1
Running Current - Heating	A	3.4	4.9	6.8
Power Input - Cooling	kW	0.52	0.89	1.39
Power Input - Heating	kW	0.72	1.12	1.54
Start - Max Run Current	A	4 - 8	5 - 8	7 - 15

INSTALLATION/REFRIGERANT				
Ref. Piping Size o.d ins (mm)	Liquid	1/4" (6.35)	1/4" (6.35)	1/4" (6.35)
	Gas	3/8" (9.52)	3/8" (9.52)	1/2" (12.7)
Ref. Max Piping Length	m	15	15	30
Vertical Height Difference (Max)				
- Outdoor Unit Above Indoor Unit	m	10	10	20
- Outdoor Unit Below Indoor Unit	m	10	10	20
Refrigerant Amount Precharged	kg	1.2	1.2	1.4
- For Pipe Length Up To	m	15	15	15
Additional Refrigerant	g/m	n/a	n/a	20

